

LOCKWOOD™

Since 1878

Superior Engineering

Premium Architectural Hardware

Flat Goods Section



Charlestown • Chicago • Tampa • Toronto

www.lockwood1878.com

TABLE OF CONTENTS

EXIT DEVICES



PUSH BAR EXIT DEVICES

Page

N1500	Heavy Duty Rim Exit Device	
N1550	Rim Exit Device	6
N1650	Fire Rated Heavy Duty Exit Device	
N1700(F)	Vertical Rod Heavy Duty Surface Mounted Exit Device	7
N1750(F)	Mortise Lock Heavy Duty Exit Device	
N1800(F)	Alarm Exit Device	8

CROSS BAR EXIT DEVICES

N500	Heavy Duty Exit Device	
N550	Rim Exit Device	9
N650	Fire Rated Heavy Duty Exit Device	
N700(F)	Vertical Rod Heavy Duty Surface Mounted Exit Device	10
N750(F)	Mortise Lock Heavy Duty Rim Exit Device	
	How To Order	11
Exterior Trim	12
Lever Trim	13

NARROW STILE EXIT DEVICES

N900	Narrow Stile Exit Device	
N800	Concealed Vertical Rod Narrow Stile Exit Device	14
N1900(F)	Rim Type Narrow Stile Exit Device	
N1850(F)	Vertical Rod Surface Mounted Narrow Stile Exit Device	15
1600 Series Trim	For Exit Devices: N1900(F) and N1850(F) How To Order N1900(F) and N1850(F)	16
N2150(F)	Rim Type Narrow Stile Exit Device	
N2250(F)	Vertical Rod Surface Mounted Narrow Stile Exit Device	17
Outside Trim	For Exit Devices: N2150(F) and N2250(F) How To Order N2150(F) and N2250(F) Description Of Finishes	18

FEATURING

LCWD 1500	19
-----------------	----

STRIKES

.....	20
-------	----



DOOR CLOSERS

4500	Heavy Duty Multi-Size Full Feature Closer	24
7000	Standard Closer	25
7710	Power Adjustable Closer	26
9000	Heavy Duty Power Adjustable Closer	27



LOCKS

CYLINDRICAL LOCKS

8000	Cylindrical Lock How To Order 8000 Series	28
Functions	For 8000 Series	29
6000	Cylindrical Leverset 6000 Lever Styles	30

MORTISE LOCKS & TRIMS

7100	Heavy Duty Stainless Steel Mortise Lock Series	
7500	Heavy Duty Mild Steel Mortise Lock Series	31
Functions	For 7100/7500 Mortise Lock Series	32
100 & 200 TRIM	For 7100/7500 Series Lever Trim	33
ADA Kit	Compliance Kit For Mortise Lock Series	34

MORTISE CYLINDERS & RINGS

300	Cylindrical Lock Cylinder	
951	Mortise Cylinder	
956	Rim Cylinder	
Key Blanks		
Cams		
Rings	4058 Compression Ring / 44, 48, 49 Collars	35

DEADBOLTS

2200	Mortise Cylinder Tubular Deadbolt Series	
2300	Single Cylinder Heavy Duty Deadbolt	
2350	Double Cylinder Heavy Duty Deadbolt	36

AUXILIARY LOCKS

1084	Heavy Duty Auxiliary Lock Knob Latch Series	
A2214	Heavy Duty Auxiliary Lock Deadbolt Series	37



GBB79	Standard Weight Full Mortise Steel Hinge	
GBB91	Standard Weight Full Mortise Stainless Steel Hinge	38
GBB68	Heavy Weight Full Mortise Steel Hinge	
GBB99	Heavy Weight Full Mortise Stainless Steel Hinge	39
G50	Full Mortise Spring Hinge Series	
GCB	Full Mortise Concealed Bearing Hinge Series	40



FLUSH BOLTS

510M	Constant Latching Flush Bolt	
610M	Automatic Flush Bolt	41
DR1500	Fire Rated Extension Flush Bolt	
DR1500A	Extension Flush Bolt For Aluminum Doors	
DR1505	Flush Bolt	42

DOOR STOPS

DR1550	Concave Wall Stop	
DR1560	Convex Wall Stop	
DR1570	Raised Height Dome Stop	
DR1580	Low Height Dome Stop	
DR1590	Heavy Duty Wall Stop	
DR1600	Heavy Duty Floor Stop	
DR1640	Kick Down Door Stop	43

SURFACE BOLTS

DR1810	Top Center Hung Pivot Jamb Portion	
DR1820	Bottom Center Hung Pivot Door Portion	
DR1830	8" Fire Rated Heavy Duty Surface Bolt	44

SURFACE BOLTS (continuous)

DR1840	12" Heavy Duty Surface Bolt	
DR1850	18", 24", 36", 60" Heavy Duty Surface Bolt	
DR1860	Pull Plate	45

PULLS & PLATES

DR1870	5-1/2" (Center to Center) Door Pull	
DR1875	3/4" Round Door Pull	
DR1880	7" (Center to Center) Door Pull	46
DR1885	1" Round Door Pull	
DR1890	9" (Center to Center) Door Pull	
DR1895	D-Shape Door Pull	47
DR389PP	Pull Plate	
DR1900	Kick Plate (.050)	
DR1910	Push Plate (.050)	48



MISCELLANEOUS

Door Savers	49
Latch Protectors	55
Thresholds, Sweeps & Weatherstripping	57
Mullion	60
Concealed Security Chain Coordinators Corner Guards	61
Fillers Overhead Surface Type Door Holders	62
Shims Sliding Door Lock Slots Smoke Gasket	63
FEATURING Display Door	64

DESCRIPTION OF FINISHES

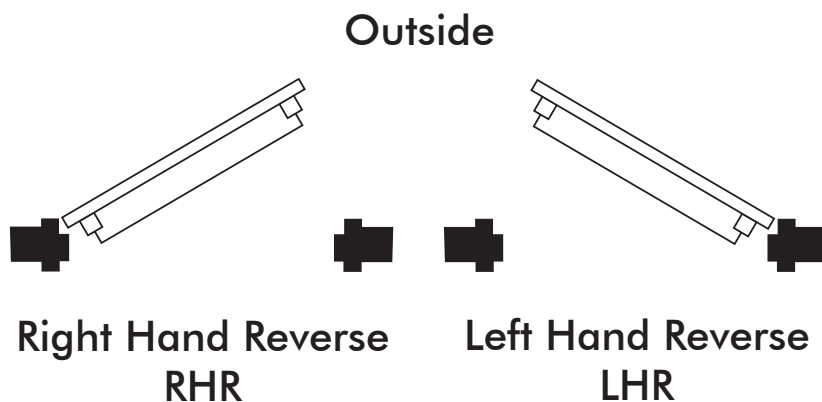


- 3 Bright Brass
- 4 Dull Brass
- 5 Satin Brass
(Blackened, satin relieved, clear coated)
- 10 Dull Bronze
- 10B Statuary Bronze
(Oil Rubbed)
- 15 Dull Nickel Plated
- 20 Statuary Bronze
- 20M Medium Bronze
- 26 Bright Chrome Plated
- 26D Dull Chrome Plated
- 27 Powder Coated Aluminum
- 28 Satin Aluminum, Clear Anodized
- 32D Dull Stainless Steel
- AMB Anodized Medium Bronze
(Duronautic)
- DBPC Dark Brown Powder Coated

**When ordering Exit Devices
"LHR" or "RHR" must be specified.**

Available for devices:

N500, N650, N700(F), N750(F), N1500,
N1650, N1700(F) & N1750(F)



510M

CONSTANT LATCHING FLUSH BOLT

- Designed for metal doors
- C-UL US listed
- Face Plate: 1 x 6-3/4"
- Used at top of door only, with automatic flush bolt at bottom of door.
Or a constant latching flush bolt combine with the auxiliary fire latch, providing significant reduction in door prep and eliminating floor prep entirely.
- When inactive door closes, flush bolt is automatically latched
- To unlatch depress plunger



NON-HANDED

EXIT DEVICES

CLOSERS

LOCKS

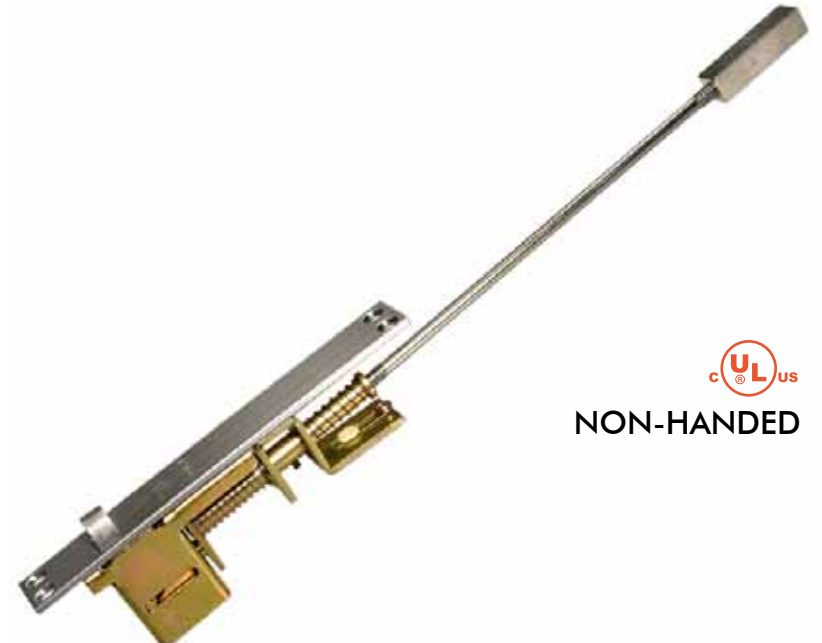
41

610M

AUTOMATIC FLUSH BOLT

- Two Model: 610M - for metal doors
610W - for wood doors
- C-UL US listed
- Fits to ANSI standard preparation
- Face Plate: 610M - 1 x 6-3/4"
610W - 1 x 8-1/2"

Thermal Lock automatically locks inactive door under high fire/heat conditions. Used in pair at top and bottom of inactive door. Fully automatic, when active door is opened, inactive door is free. To use one unit for top only, combine with an auxiliary fire latch which replaces the bottom bolt. This combination eliminates floor prep.



NON-HANDED

HINGES

FLAT GOODS

MISCELLANEOUS

LOCKWOOD™ 

DR1500

- Fire rated by C-UL US (FIRE RATING 1.5 HOURS)
- For use in hollow metal doors to secure inactive leaf in a pair of doors
- FACE: 1" x 6-3/4" (25 x 171mm) with 12" Rod
- BOLT HEAD: 1/2" (12mm)
- FINISHES: 3, 4, 5, 10, 10B, 26, 32D

FIRE RATED EXTENSION FLUSH BOLT



Available in different finishes.



Strike

DR1500A

- For use to secure inactive leaf in a pair of doors
- Radius face for aluminum doors
- FACE: 1" x 5" (25 x 127mm) face with Rod
- BOLT HEAD: 1/2" (12mm) Round Bolt nylon head
- FINISHES: 28, AMB

EXTENSION FLUSH BOLT FOR ALUMINUM DOORS



Available in different finishes.



Strike

DR1505

- Easy to install
- For use in wood doors to secure inactive leaf in a pair of doors
- FACE: 1" x 6-3/4" (25 x 171mm)
- Available in different finishes

FLUSH BOLT



Strike

LOCKWOOD™

DOOR STOPS

DR1550 CONCAVE WALL STOP

- Easy to install
- Concealed Mounting
- Non-marking rubber bumper
- For use with knob or lever with turn button
- Available in different finishes



DR1560 CONVEX WALL STOP

- Easy to install
- Concealed Mounting
- Non-marking rubber bumper
- For use with plain knob, lever or pull handles
- Available in different finishes



DR1570 RAISED HEIGHT DOME STOP

- Easy to install
- For doors with threshold or with undercut
- Available in different finishes



DR1580 LOW HEIGHT DOME STOP

- Easy to install
- For doors without threshold or any undercut
- Available in different finishes



DR1590 HEAVY DUTY WALL STOP

- Easy to install
- Non-marking rubber bumper
- Available in different finishes



DR1600 HEAVY DUTY FLOOR STOP

- Easy to install
- Non-marking rubber bumper
- For doors undercut up to 64mm
- Available in different finishes



DR1640 KICK-DOWN DOOR STOP

- Easy to install
- Non-marking rubber bumper
- Available in different finishes



DR1810

TOP CENTER HUNG PIVOT JAMB PORTION

- Easy to install
- Double or single action
- Adjustable walking beam with cover



DR1820

BOTTOM CENTER HUNG PIVOT ARM DOOR PORTION

- Easy to install
- Double or single action



DR1830

8" FIRE RATED HEAVY DUTY SURFACE BOLT

- Easy to install and superior engineering
- Fire rated by C-UL US
- Available with top and bottom strikes
- Comes with concealed combination screws
- Sex bolts available upon request
- FINISHES: 3, 4, 5, 10, 10B, 26, 32D



*Dare to compare...
Our pricing to our competitors.
You will see tremendous cost savings!*



Available in different finishes.

LOCKWOOD™

DR1840

- Easy to install and superior engineering
- Available with top and bottom strikes
- Comes with concealed combination screws
- Sex bolts available upon request
- FINISHES: 3, 4, 5, 10, 10B, 26, 32D



Available in different finishes.

12" HEAVY DUTY SURFACE BOLT



Top strike

Bottom strike

*Dare to compare...
Our pricing to our competitors.
You will see tremendous cost savings!*

EXIT DEVICES

CLOSERS

DR1850

- Easy to install and superior engineering
- Available in 18", 24", 36" or 60"
- Available with top and bottom strikes
- Comes with concealed combination screws
- Sex bolts available upon request
- FINISHES: 3, 4, 5, 10, 10B, 26, 32D



Available in different finishes.

UP TO 60" HEAVY DUTY SURFACE BOLT



Top strike

Bottom strike

*Dare to compare...
Our pricing to our competitors.
You will see tremendous cost savings!*

LOCKS

45

HINGES

DR1860

- Easy to install
- 4" X 16" with 5-1/2" centers on pull 2" projection
- FINISHES: 3, 4, 5, 10, 10B, 26, 26D, 27, 32D

PULL PLATE



FLAT GOODS

MISCELLANEOUS

DR1870

5 1/2" (C/L TO C/L) DOOR PULL

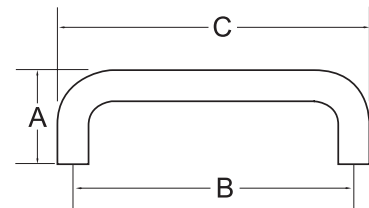
- Easy to install
- 5 1/2" center to center
- FINISHES: 3, 4, 5, 10, 10B, 26, 26D, 27, 32D



DR1875

3/4" ROUND DOOR PULL

- Easy to install
- Made from the finest architectural brass, bronze, stainless steel, and aluminum
- FINISHES: 3, 10, 10B, 26, 26D, 27/28, 32D



PRODUCT NO.	PROJ. "A"	C/L TO C/L "B"	LENGTH "C"
1875-6	2-1/4"	6"	6-3/4"
1875-8		8"	8-3/4"
1875-10		10"	10-3/4"

DR1880

7" (C/L TO C/L) DOOR PULL

- Easy to install
- 7" center to center
- FINISHES: 3, 4, 5, 10, 10B, 26, 26D, 27, 32D



EXIT DEVICES

CLOSERS

LOCKS

46

HINGES

FLAT GOODS

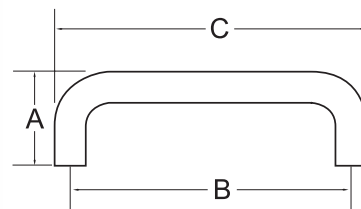
MISCELLANEOUS

DR1885

1" ROUND DOOR PULL

- Easy to install
- Made from the finest architectural brass, bronze, stainless steel, and aluminum
- FINISHES: 3, 10, 10B, 26, 26D, 27/28, 32D

PRODUCT NO.	PROJ. "A"	C/L TO C/L "B"	LENGTH "C"
1885-8	2-1/2"	8"	9"
1885-10		10"	11"
1885-12		12"	13"



EXIT DEVICES

CLOSERS

LOCKS

47

HINGES

DR1890

9" (C/L TO C/L) DOOR PULL

- Easy to install
- 9" center to center
- FINISHES: 3, 4, 5, 10, 10B, 26, 26D, 27, 32D



FLAT GOODS

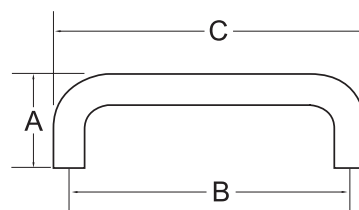
MISCELLANEOUS

DR1895

D-SHAPE DOOR PULL

- Easy to install
- Made from the finest architectural brass, bronze, stainless steel, and aluminum
- FINISHES: 3, 10, 10B, 26, 26D, 27/28, 32D

PRODUCT NO.	PROJ. "A"	C/L TO C/L "B"	LENGTH "C"
1895-6	2"	6"	6-1/2"
1895-7		7"	7-1/2"
1895-8		8"	8-1/2"
1895-9		9"	9-1/2"
1895-10		10"	10-1/2"



LOCKWOOD™

DR389PP

PULL PLATE



- Pulls are centered on plates up to 4" wide. However, they are offset 2" from the edge on plates wider than 4"
- FINISHES: 3, 10, 10B, 26, 26D, 27/28, 32D

PRODUCT NO.	PLATE SIZE	PULL C/L TO C/L
389PP-1	3-1/2" x 15"	6"
389PP-2	4" x 16"	
389PP-3	6" x 16"	
389PP-4	3-1/2" x 15"	8"
389PP-5	4" x 16"	
389PP-6	6" x 16"	
389PP-7	3-1/2" x 15"	10"
389PP-8	4" x 16"	
389PP-9	6" x 16"	

DR1900

KICK PLATE (.050)



- Easy to install
- All sizes available
- Double sided tape optional
- Available: Anodized aluminum (PVC coated), 304 stainless steel (PVC coated), Solid architectural grade brass and bronze (polished to any finish), Electrostatically power coated

DR1910

PUSH PLATE (.050)



- Easy to install
- All sizes available
- Double sided tape optional
- Available: Anodized aluminum (PVC coated), 304 stainless steel (PVC coated), Solid architectural grade brass and bronze (polished to any finish), Electrostatically power coated

LOCKWOOD™

Since 1878

Lockwood Industries Inc.

USA/Mexico Tel:1•800•446•1141 Fax:1•603•826•4186

Canada Tel:1•888•678•9898 Fax:1•888•503•6667

Web site www.lockwood1878.com

e-mail info@lockwood1878.com